

Пробирки для взятия проб поверхностной микробиологии

Технические характеристики

По вопросам продаж и поддержки обращайтесь:

Алматы (727)345-47-04
Ангарск (3955)60-70-56
Архангельск (8182)63-90-72
Астрахань (8512)99-46-04
Барнаул (3852)73-04-60
Белгород (4722)40-23-64
Благовещенск (4162)22-76-07
Брянск (4832)59-03-52
Владивосток (423)249-28-31
Владикавказ (8672)28-90-48
Владимир (4922)49-43-18
Волгоград (844)278-03-48
Вологда (8172)26-41-59
Воронеж (473)204-51-73
Екатеринбург (343)384-55-89

Иваново (4932)77-34-06
Ижевск (3412)26-03-58
Иркутск (395)279-98-46
Казань (843)206-01-48
Калининград (4012)72-03-81
Калуга (4842)92-23-67
Кемерово (3842)65-04-62
Киров (8332)68-02-04
Коломна (4966)23-41-49
Кострома (4942)77-07-48
Краснодар (861)203-40-90
Красноярск (391)204-63-61
Курск (4712)77-13-04
Курган (3522)50-90-47
Липецк (4742)52-20-81

Магнитогорск (3519)55-03-13
Москва (495)268-04-70
Мурманск (8152)59-64-93
Набережные Челны (8552)20-53-41
Нижний Новгород (831)429-08-12
Новокузнецк (3843)20-46-81
Ноябрьск (3496)41-32-12
Новосибирск (383)227-86-73
Омск (3812)21-46-40
Орел (4862)44-53-42
Оренбург (3532)37-68-04
Пенза (8412)22-31-16
Петрозаводск (8142)55-98-37
Псков (8112)59-10-37
Пермь (342)205-81-47

Ростов-на-Дону (863)308-18-15
Рязань (4912)46-61-64
Самара (846)206-03-16
Санкт-Петербург (812)309-46-40
Саратов (845)249-38-78
Севастополь (8692)22-31-93
Саранск (8342)22-96-24
Симферополь (3652)67-13-56
Смоленск (4812)29-41-54
Сочи (862)225-72-31
Ставрополь (8652)20-65-13
Сургут (3462)77-98-35
Сыктывкар (8212)25-95-17
Тамбов (4752)50-40-97
Тверь (4822)63-31-35

Тольятти (8482)63-91-07
Томск (3822)98-41-53
Тула (4872)33-79-87
Тюмень (3452)66-21-18
Ульяновск (8422)24-23-59
Улан-Удэ (3012)59-97-51
Уфа (347)229-48-12
Хабаровск (4212)92-98-04
Чебоксары (8352)28-53-07
Челябинск (351)202-03-61
Череповец (8202)49-02-64
Чита (3022)38-34-83
Якутск (4112)23-90-97
Ярославль (4852)69-52-93

Россия +7(495)268-04-70

Казахстан +(727)345-47-04

Беларусь +(375)257-127-884

Узбекистан +998(71)205-18-59

Киргизия +996(312)96-26-47

эл.почта: kja@nt-rt.ru || сайт: <https://kangjian.nt-rt.ru>

- ◆ KANGJIAN Surface Microbiology Sampling Tubes (pre-filled 0.85% saline with neutralizer) are mainly used for the collection of microorganisms (including viruses) on the surface of environmental object surface, applicable to various industry like cold chain, catering industry, hospital sensory control and public health monitoring, etc.
- ◆ Sampling tubes containing neutralizing agents can effectively neutralize disinfectant residues on the surface of objects. It can neutralize not only quaternary ammonium disinfectants, but also single disinfectants such as alcohols, phenols, aldehydes, peroxides, chlorine-containing, iodine-containing and compound disinfectants with no more than 3 disinfectant substances. It guarantees bacteria and viruses in the sample to be detected successfully.
- ◆ Swabs with polyester sponge swab heads have significantly higher collection efficiency and release rates than conventional swabs. The large swab head, having a large contact area with the sample surface, allows for shorter collection times.
- ◆ PP material sampling tube body is resistant to high-strength extrusion impact, resistant to -80°C~+121°C. The safety anti-leakage cap matches tightly with the tube, and guarantees leak-proof.

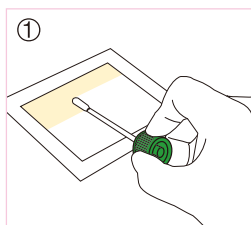


Polyester sponge swab head
Higher collection efficiency and release rates.

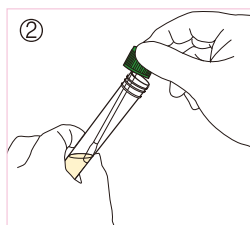
158-1001	10mL	Ø16×100mm	Tube:PP Swab head: Polyester sponge	3.5mL, 0.85% saline (with neutralizer)	STERILE R	50 PCS	500 PCS/BOX

How to use:

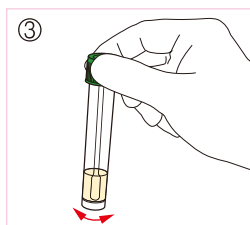
Notes on use: The tubes are recommended to be delivered to the laboratory for testing within 2 hours after sampling, allowing for transportation at room temperature 4-26°C. If more than 2 hours, they should be shipped at 2-8°C and tested within 24 hours. Positive rates will be reduced when samples tested beyond 24 hours.



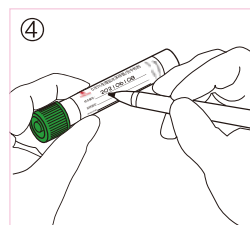
① Select a certain size area to be examined, open the screw cap, and sample by placing the sponge swab at 30° to the surface, and cross-smear the swab for twice.



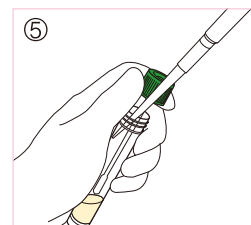
② Place the swab back into the tube and screw the cap on tightly.



③ Multiple shaking and mixing to fully elute the collected microorganisms into saline containing neutralizing agent.



④ Mark the sampling information on the tube label, including: sampling number, sampling area, sampling site, sampling date, etc.



⑤ Take 1mL of sample solution for colony culture, or an appropriate amount of sample solution for viral RNA detection.

Swab collection efficiency comparison:

<p>Polyester Sponge Swab</p> <p>Characterized by softness and good liquid absorption. Good contact with the concave and convex surface of the object and larger contact area. (As shown on the left)</p>	<p>Synthetic Fiber Swab</p> <p>Weak hydrophilicity, little deformation thus small contact area when contacting with the concave and convex surfaces of the object. (As shown on the left)</p>
---	--

Sample recovery efficiency comparison:

<p>Polyester Sponge Swab</p> <p>The recommended polyester sponge sampling swab has nearly twice the collection recycling rate of a swab.</p>	<p>Synthetic Fiber Swab</p>
---	------------------------------------

По вопросам продаж и поддержки обращайтесь:

Алматы (727)345-47-04
Ангарск (3955)60-70-56
Архангельск (8182)63-90-72
Астрахань (8512)99-46-04
Барнаул (3852)73-04-60
Белгород (4722)40-23-64
Благовещенск (4162)22-76-07
Брянск (4832)59-03-52
Владивосток (423)249-28-31
Владикавказ (8672)28-90-48
Владимир (4922)49-43-18
Волгоград (844)278-03-48
Вологда (8172)26-41-59
Воронеж (473)204-51-73
Екатеринбург (343)384-55-89

Иваново (4932)77-34-06
Ижевск (3412)26-03-58
Иркутск (395)279-98-46
Казань (843)206-01-48
Калининград (4012)72-03-81
Калуга (4842)92-23-67
Кемерово (3842)65-04-62
Киров (8332)68-02-04
Коломна (4966)23-41-49
Кострома (4942)77-07-48
Краснодар (861)203-40-90
Красноярск (391)204-63-61
Курск (4712)77-13-04
Курган (3522)50-90-47
Липецк (4742)52-20-81

Магнитогорск (3519)55-03-13
Москва (495)268-04-70
Мурманск (8152)59-64-93
Набережные Челны (8552)20-53-41
Нижний Новгород (831)429-08-12
Новокузнецк (3843)20-46-81
Ноябрьск (3496)41-32-12
Новосибирск (383)227-86-73
Омск (3812)21-46-40
Орел (4862)44-53-42
Оренбург (3532)37-68-04
Пенза (8412)22-31-16
Петрозаводск (8142)55-98-37
Псков (8112)59-10-37
Пермь (342)205-81-47

Ростов-на-Дону (863)308-18-15
Рязань (4912)46-61-64
Самара (846)206-03-16
Санкт-Петербург (812)309-46-40
Саратов (845)249-38-78
Севастополь (8692)22-31-93
Саранск (8342)22-96-24
Симферополь (3652)67-13-56
Смоленск (4812)29-41-54
Сочи (862)225-72-31
Ставрополь (8652)20-65-13
Сургут (3462)77-98-35
Сыктывкар (8212)25-95-17
Тамбов (4752)50-40-97
Тверь (4822)63-31-35

Тольятти (8482)63-91-07
Томск (3822)98-41-53
Тула (4872)33-79-87
Тюмень (3452)66-21-18
Ульяновск (8422)24-23-59
Улан-Удэ (3012)59-97-51
Уфа (347)229-48-12
Хабаровск (4212)92-98-04
Чебоксары (8352)28-53-07
Челябинск (351)202-03-61
Череповец (8202)49-02-64
Чита (3022)38-34-83
Якутск (4112)23-90-97
Ярославль (4852)69-52-93

Россия +7(495)268-04-70

Казахстан +(727)345-47-04

Беларусь +(375)257-127-884

Узбекистан +998(71)205-18-59

Киргизия +996(312)96-26-47

эл.почта: kja@nt-rt.ru || сайт: <https://kangjian.nt-rt.ru>