

# Системы сбора и хранения слюны

## Технические характеристики

По вопросам продаж и поддержки обращайтесь:

Алматы (727)345-47-04  
Ангарск (3955)60-70-56  
Архангельск (8182)63-90-72  
Астрахань (8512)99-46-04  
Барнаул (3852)73-04-60  
Белгород (4722)40-23-64  
Благовещенск (4162)22-76-07  
Брянск (4832)59-03-52  
Владивосток (423)249-28-31  
Владикавказ (8672)28-90-48  
Владимир (4922)49-43-18  
Волгоград (844)278-03-48  
Вологда (8172)26-41-59  
Воронеж (473)204-51-73  
Екатеринбург (343)384-55-89

Иваново (4932)77-34-06  
Ижевск (3412)26-03-58  
Иркутск (395)279-98-46  
Казань (843)206-01-48  
Калининград (4012)72-03-81  
Калуга (4842)92-23-67  
Кемерово (3842)65-04-62  
Киров (8332)68-02-04  
Коломна (4966)23-41-49  
Кострома (4942)77-07-48  
Краснодар (861)203-40-90  
Красноярск (391)204-63-61  
Курск (4712)77-13-04  
Курган (3522)50-90-47  
Липецк (4742)52-20-81

Магнитогорск (3519)55-03-13  
Москва (495)268-04-70  
Мурманск (8152)59-64-93  
Набережные Челны (8552)20-53-41  
Нижний Новгород (831)429-08-12  
Новокузнецк (3843)20-46-81  
Ноябрьск (3496)41-32-12  
Новосибирск (383)227-86-73  
Омск (3812)21-46-40  
Орел (4862)44-53-42  
Оренбург (3532)37-68-04  
Пенза (8412)22-31-16  
Петрозаводск (8142)55-98-37  
Псков (8112)59-10-37  
Пермь (342)205-81-47

Ростов-на-Дону (863)308-18-15  
Рязань (4912)46-61-64  
Самара (846)206-03-16  
Санкт-Петербург (812)309-46-40  
Саратов (845)249-38-78  
Севастополь (8692)22-31-93  
Саранск (8342)22-96-24  
Симферополь (3652)67-13-56  
Смоленск (4812)29-41-54  
Сочи (862)225-72-31  
Ставрополь (8652)20-65-13  
Сургут (3462)77-98-35  
Сыктывкар (8212)25-95-17  
Тамбов (4752)50-40-97  
Тверь (4822)63-31-35

Тольятти (8482)63-91-07  
Томск (3822)98-41-53  
Тула (4872)33-79-87  
Тюмень (3452)66-21-18  
Ульяновск (8422)24-23-59  
Улан-Удэ (3012)59-97-51  
Уфа (347)229-48-12  
Хабаровск (4212)92-98-04  
Чебоксары (8352)28-53-07  
Челябинск (351)202-03-61  
Череповец (8202)49-02-64  
Чита (3022)38-34-83  
Якутск (4112)23-90-97  
Ярославль (4852)69-52-93

Россия +7(495)268-04-70

Казахстан +(727)345-47-04

Беларусь +(375)257-127-884

Узбекистан +998(71)205-18-59

Киргизия +996(312)96-26-47

эл.почта: [kja@nt-rt.ru](mailto:kja@nt-rt.ru) || сайт: <https://kangjian.nt-rt.ru>

# Saliva Collection and Preservation system

- ◎ The main material of the system is medical-grade PS plastic, which is used for saliva collection. The vacuum collection tube is made of PET polymer raw materials and is mainly used for saliva collection and preservation.
- ◎ It is suitable for the collection, storage and transportation of DNA samples during genetic disease screening, genome testing and disease testing.
- ◎ Non-invasive sample collection, safe and convenient operation. Meanwhile, the saliva sample has no contact with the medical staff and has no pollution, and it can be directly used for test by automatic analyzer without twice sample transfer.
- ◎ Produced in class 100,000 workshop, optional general grade or free of RNase, DNase, and pyrogens.
- ◎ Sterilization method: irradiation.



Red prohibition mark indicates the position of the suction hole.



Rectangular saliva specimen collection port and round suction hole.



A puncture needle is built in the suction hole. Non-specialized persons are prohibited from removing the upper label to avoid hand injury.



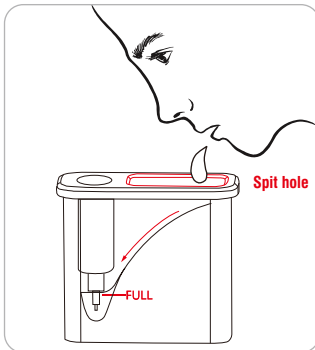
The lower suction head is sealed with the silicone O-ring to the bottom of the suction hole to ensure that the saliva is completely sucked into the preservation tube.



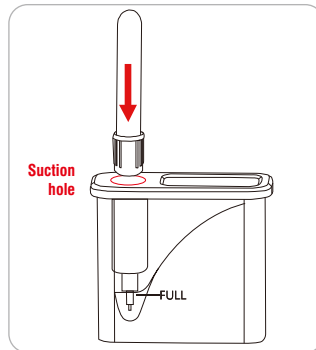
073-00015  
(KJ535 + KJ535-1)

REF	Original REF.				STERILE			
073-00015	KJ535	-	PS	75×35×65mm	Irradiation	20	500	Saliva container, bulk packed in bag
	KJ535-1	10mL	PET	Ø16×100mm	Irradiation	100 per rack	1200	Vacuum saliva collection tube

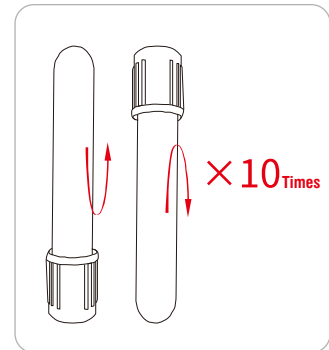
## How to use



Relax your cheeks and knead gently for 30 seconds to facilitate saliva. Gently spit saliva into spit hole to allow the saliva to flow into the collection bottom about "FULL" mark line. (the upper foam is not included).



Insert the preservation tube in the direction of the red arrow and keep it stand for several seconds. Under the negative pressure in the tube, saliva will be sucked into the tube. Pulled out the tube after suction finished.



Invert the collection tube 10 times to ensure thorough mixing of the saliva with the preservative.

# Saliva Collection and Preservation System

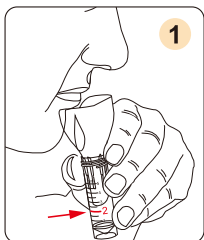
This collector can be directly used for the collection, preservation and transportation of saliva, and the cfDNA (CellFree DNA) or virus samples in it can be stabilized by the preservation solution. It can be used for molecular diagnostic testing (including but not limited to PCR or branched DNA amplification technology), virus testing or other in vitro testing of saliva samples.

- The collection process is painless and non-invasive, and can be collected at home, which is more convenient and free.
- It consists of a saliva collector (collection funnel + sample collection tube), Replacing cap, and preservation tube (Preset 2-3mL cfDNA/virus preservation medium).
- It is used to collect, preserve and transport cfDNA or virus in saliva samples at room temperature.
- When used for virus sample collection, different virus sample preservation solutions can be customized, such as VTM preservation solution (Purple red or clear pink), preservation solution containing inactivator (colorless) or normal saline.
- When it is used to collect human DNA, DNA preservation solution is preset in the preservation solution tube. cfDNA can be preserved stably for 24 months at room temperature, suitable for a variety of DNA extraction and purification kits.
- The humanized design of the collection funnel fits the human mouth structure and is easy to operate.

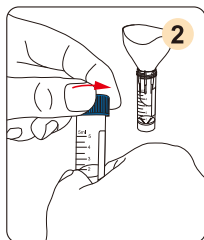


REF	Funnel	Tube	Preservation Solution		
073-00125	Thread type	5mL, Ø16×60mm	Normal saline Optional: Non-inactivated medium Inactivated medium	200	Used for virus sample collection.
073-01125	Insert type	5mL, Ø16×60mm		200	
073-01127	Insert type	7mL, Ø13×84mm		200	
073-11510	Insert type	10mL, Ø16×100mm		200	
073-00025	Thread type	5mL, Ø16×60mm	DNA preservation solution	200	Used for molecular diagnosis, DNA genetic identification, etc.
073-01025	Insert type	5mL, Ø16×60mm		200	
073-01027	Insert type	7mL, Ø13×84mm		200	
073-10510	Insert type	10mL, Ø16×100mm		200	

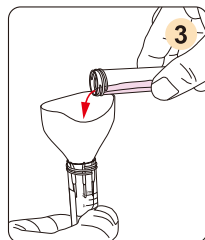
## How to use



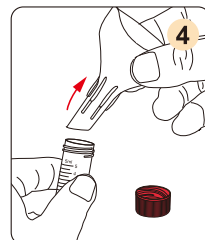
1 Clean the mouth with clean water before use, and gently spit 2mL of saliva into the collection funnel (the volume does not contain saliva foam).



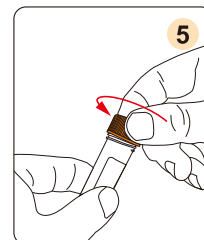
2 Place the saliva collection tube to keep it upright, and unscrew the cap of the preservation tube.



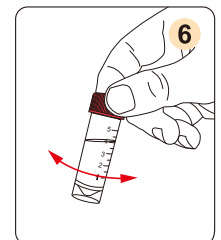
3 Gently pour the medium from the preservation tube into the funnel.



4 Pull out the funnel, properly dispose the waste funnel and empty preservation tube.



5 Tighten the collection tube with the replacing cap.



6 Shake the collection tube repeatedly and mix the saliva and preservation medium completely.

## По вопросам продаж и поддержки обращайтесь:

Алматы (727)345-47-04  
Ангарск (3955)60-70-56  
Архангельск (8182)63-90-72  
Астрахань (8512)99-46-04  
Барнаул (3852)73-04-60  
Белгород (4722)40-23-64  
Благовещенск (4162)22-76-07  
Брянск (4832)59-03-52  
Владивосток (423)249-28-31  
Владикавказ (8672)28-90-48  
Владимир (4922)49-43-18  
Волгоград (844)278-03-48  
Вологда (8172)26-41-59  
Воронеж (473)204-51-73  
Екатеринбург (343)384-55-89

Иваново (4932)77-34-06  
Ижевск (3412)26-03-58  
Иркутск (395)279-98-46  
Казань (843)206-01-48  
Калининград (4012)72-03-81  
Калуга (4842)92-23-67  
Кемерово (3842)65-04-62  
Киров (8332)68-02-04  
Коломна (4966)23-41-49  
Кострома (4942)77-07-48  
Краснодар (861)203-40-90  
Красноярск (391)204-63-61  
Курск (4712)77-13-04  
Курган (3522)50-90-47  
Липецк (4742)52-20-81

Магнитогорск (3519)55-03-13  
Москва (495)268-04-70  
Мурманск (8152)59-64-93  
Набережные Челны (8552)20-53-41  
Нижний Новгород (831)429-08-12  
Новокузнецк (3843)20-46-81  
Ноябрьск (3496)41-32-12  
Новосибирск (383)227-86-73  
Омск (3812)21-46-40  
Орел (4862)44-53-42  
Оренбург (3532)37-68-04  
Пенза (8412)22-31-16  
Петрозаводск (8142)55-98-37  
Псков (8112)59-10-37  
Пермь (342)205-81-47

Ростов-на-Дону (863)308-18-15  
Рязань (4912)46-61-64  
Самара (846)206-03-16  
Санкт-Петербург (812)309-46-40  
Саратов (845)249-38-78  
Севастополь (8692)22-31-93  
Саранск (8342)22-96-24  
Симферополь (3652)67-13-56  
Смоленск (4812)29-41-54  
Сочи (862)225-72-31  
Ставрополь (8652)20-65-13  
Сургут (3462)77-98-35  
Сыктывкар (8212)25-95-17  
Тамбов (4752)50-40-97  
Тверь (4822)63-31-35

Тольятти (8482)63-91-07  
Томск (3822)98-41-53  
Тула (4872)33-79-87  
Тюмень (3452)66-21-18  
Ульяновск (8422)24-23-59  
Улан-Удэ (3012)59-97-51  
Уфа (347)229-48-12  
Хабаровск (4212)92-98-04  
Чебоксары (8352)28-53-07  
Челябинск (351)202-03-61  
Череповец (8202)49-02-64  
Чита (3022)38-34-83  
Якутск (4112)23-90-97  
Ярославль (4852)69-52-93

Россия +7(495)268-04-70

Казахстан +(727)345-47-04

Беларусь +(375)257-127-884

Узбекистан +998(71)205-18-59

Киргизия +996(312)96-26-47

эл.почта: [kja@nt-rt.ru](mailto:kja@nt-rt.ru) || сайт: <https://kangjian.nt-rt.ru>