

Пипетка Пастера

Технические характеристики

По вопросам продаж и поддержки обращайтесь:

Алматы (727)345-47-04
Ангарск (3955)60-70-56
Архангельск (8182)63-90-72
Астрахань (8512)99-46-04
Барнаул (3852)73-04-60
Белгород (4722)40-23-64
Благовещенск (4162)22-76-07
Брянск (4832)59-03-52
Владивосток (423)249-28-31
Владикавказ (8672)28-90-48
Владимир (4922)49-43-18
Волгоград (844)278-03-48
Вологда (8172)26-41-59
Воронеж (473)204-51-73
Екатеринбург (343)384-55-89

Иваново (4932)77-34-06
Ижевск (3412)26-03-58
Иркутск (395)279-98-46
Казань (843)206-01-48
Калининград (4012)72-03-81
Калуга (4842)92-23-67
Кемерово (3842)65-04-62
Киров (8332)68-02-04
Коломна (4966)23-41-49
Кострома (4942)77-07-48
Краснодар (861)203-40-90
Красноярск (391)204-63-61
Курск (4712)77-13-04
Курган (3522)50-90-47
Липецк (4742)52-20-81

Магнитогорск (3519)55-03-13
Москва (495)268-04-70
Мурманск (8152)59-64-93
Набережные Челны (8552)20-53-41
Нижний Новгород (831)429-08-12
Новокузнецк (3843)20-46-81
Ноябрьск (3496)41-32-12
Новосибирск (383)227-86-73
Омск (3812)21-46-40
Орел (4862)44-53-42
Оренбург (3532)37-68-04
Пенза (8412)22-31-16
Петрозаводск (8142)55-98-37
Псков (8112)59-10-37
Пермь (342)205-81-47

Ростов-на-Дону (863)308-18-15
Рязань (4912)46-61-64
Самара (846)206-03-16
Санкт-Петербург (812)309-46-40
Саратов (845)249-38-78
Севастополь (8692)22-31-93
Саранск (8342)22-96-24
Симферополь (3652)67-13-56
Смоленск (4812)29-41-54
Сочи (862)225-72-31
Ставрополь (8652)20-65-13
Сургут (3462)77-98-35
Сыктывкар (8212)25-95-17
Тамбов (4752)50-40-97
Тверь (4822)63-31-35

Тольятти (8482)63-91-07
Томск (3822)98-41-53
Тула (4872)33-79-87
Тюмень (3452)66-21-18
Ульяновск (8422)24-23-59
Улан-Удэ (3012)59-97-51
Уфа (347)229-48-12
Хабаровск (4212)92-98-04
Чебоксары (8352)28-53-07
Челябинск (351)202-03-61
Череповец (8202)49-02-64
Чита (3022)38-34-83
Якутск (4112)23-90-97
Ярославль (4852)69-52-93

Россия +7(495)268-04-70

Казахстан +(727)345-47-04

Беларусь +(375)257-127-884


Узбекистан +998(71)205-18-59

Киргизия +996(312)96-26-47

эл.почта: kja@nt-rt.ru || сайт: <https://kangjian.nt-rt.ru>



Specifications

REF.	Tube Material	Qty in case	Qty in case	Detailed information
193-2301	Lead-free glass	20	200	

Product Overview

- IVF Petri dishes are made of medical grade polystyrene and are suitable for the collection of sperm/oocytes and embryo preparation during in vitro fertilization. Specially for: microscopy, thawing and recovery, embryo culture.
- Made from medical grade raw material polystyrene in cleaning room.
- The products are scratch-free, of uniform thickness, without deformation, all dishes have an absolute flat bottom which guarantees all dishes receive the same bottom temperature for optimal manipulation and observation of oocytes and embryos.
- User-friendly design for easy gripping and other specialized operations with more safety.
- BPA free, Non-pyrogenic, non-cytotoxic, non-genotoxic, ensures embryo viability during complex processes.
- Individual peel pack, Sterilized by irradiation (10⁻⁶ SAL).

Pasteur Pipette

- The Pasteur pipette features a smooth surface with slender walls and a flat mouth, made from high-quality lead-free glass.
- Customizable lengths from 150mm to 230mm, with the tube outer diameter of 7±0.2mm and the capillary outer diameter of 1.4±0.1mm.
- Ideal for in vitro fertilization procedures, these pipettes can be used to remove granulosa cells around the fertilized egg or for transferring oocytes/embryos.

Assisted Reproductive Technology (ART) mainly refers to In Vitro Fertilization (IVF), which is used to help infertile couples conceive, also known as test-tube baby. The oocytes and sperm are removed and placed in a test tube to fertilize them, and then the fertilized ovum is transferred back to the mother's uterus to develop into a fetus. IVF Petri dishes and culture plates are suitable for the collection of sperm and eggs and preparation of embryos during the IVF process. Specific applications include the preparation and cultivation of spermatozoa or embryos in vitro, gamete intrafallopian transfer (GIFT), intracytoplasmic sperm injection (ICSI), holding of oocytes and spermatozoa during fertilization, or other in vitro reproductive processes, etc.

5

Fertilized oocyte (or embryo/blastocyst) implanted in the uterus

1

Mature oocyte production

2

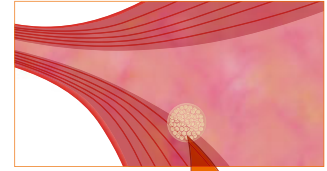
Remove oocytes from the ovary

3

Sperm supply

4

Oocytes and sperm are fertilized and incubated in IVF dish with manual intervention

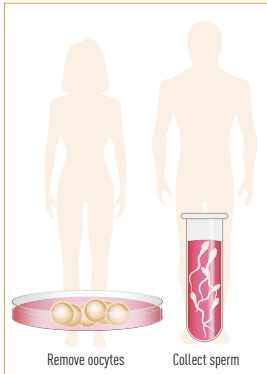


[Note: The above graphic is for reference only. If any doubt, please refer to the authoritative interpretation.]

IVF Key Processes

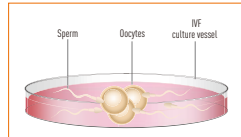
Step 1

Oocyte and sperm collection



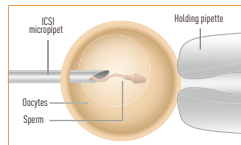
Step 2

Two types of in vitro fertilization



Multiple oocytes were selected for isolation and sperm were added to the IVF petri dish to fertilize the oocytes.

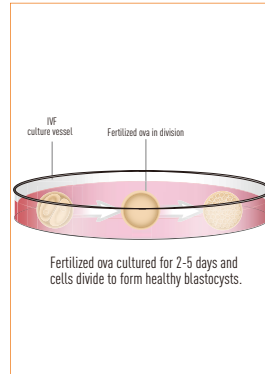
OR



Another type of fertilization: the process of fertilization through intracytoplasmic sperm injection (ICSI), single sperm injection directly into an oocyte.

Step 3

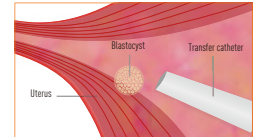
Fertilized ovum culture



Fertilized ova cultured for 2-5 days and cells divide to form healthy blastocysts.

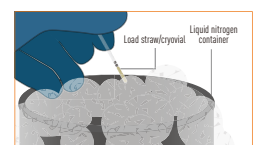
Step 4

Implantation or cryostorage



Blastocysts removed from the culture vessel and implanted in the woman's uterus.

OR



Oocytes, sperms or blastocysts may be cryopreserved for later use.

[Note: The above graphic is for reference only. If any doubt, please refer to the authoritative interpretation.]

IVF Related Consumables



IVF Special petri dish/Multi-well plate



Micromanipulation pipette



Sperms/Oocytes collection container/Vessel



Sperms/Oocytes/Embryo Cryovial

По вопросам продаж и поддержки обращайтесь:

Алматы (727)345-47-04
Ангарск (3955)60-70-56
Архангельск (8182)63-90-72
Астрахань (8512)99-46-04
Барнаул (3852)73-04-60
Белгород (4722)40-23-64
Благовещенск (4162)22-76-07
Брянск (4832)59-03-52
Владивосток (423)249-28-31
Владикавказ (8672)28-90-48
Владимир (4922)49-43-18
Волгоград (844)278-03-48
Вологда (8172)26-41-59
Воронеж (473)204-51-73
Екатеринбург (343)384-55-89

Иваново (4932)77-34-06
Ижевск (3412)26-03-58
Иркутск (395)279-98-46
Казань (843)206-01-48
Калининград (4012)72-03-81
Калуга (4842)92-23-67
Кемерово (3842)65-04-62
Киров (8332)68-02-04
Коломна (4966)23-41-49
Кострома (4942)77-07-48
Краснодар (861)203-40-90
Красноярск (391)204-63-61
Курск (4712)77-13-04
Курган (3522)50-90-47
Липецк (4742)52-20-81

Магнитогорск (3519)55-03-13
Москва (495)268-04-70
Мурманск (8152)59-64-93
Набережные Челны (8552)20-53-41
Нижний Новгород (831)429-08-12
Новокузнецк (3843)20-46-81
Ноябрьск (3496)41-32-12
Новосибирск (383)227-86-73
Омск (3812)21-46-40
Орел (4862)44-53-42
Оренбург (3532)37-68-04
Пенза (8412)22-31-16
Петрозаводск (8142)55-98-37
Псков (8112)59-10-37
Пермь (342)205-81-47

Ростов-на-Дону (863)308-18-15
Рязань (4912)46-61-64
Самара (846)206-03-16
Санкт-Петербург (812)309-46-40
Саратов (845)249-38-78
Севастополь (8692)22-31-93
Саранск (8342)22-96-24
Симферополь (3652)67-13-56
Смоленск (4812)29-41-54
Сочи (862)225-72-31
Ставрополь (8652)20-65-13
Сургут (3462)77-98-35
Сыктывкар (8212)25-95-17
Тамбов (4752)50-40-97
Тверь (4822)63-31-35

Тольятти (8482)63-91-07
Томск (3822)98-41-53
Тула (4872)33-79-87
Тюмень (3452)66-21-18
Ульяновск (8422)24-23-59
Улан-Удэ (3012)59-97-51
Уфа (347)229-48-12
Хабаровск (4212)92-98-04
Чебоксары (8352)28-53-07
Челябинск (351)202-03-61
Череповец (8202)49-02-64
Чита (3022)38-34-83
Якутск (4112)23-90-97
Ярославль (4852)69-52-93

Россия +7(495)268-04-70

Казахстан +(727)345-47-04

Беларусь +(375)257-127-884

Узбекистан +998(71)205-18-59

Киргизия +996(312)96-26-47

эл.почта: kja@nt-rt.ru || сайт: <https://kangjian.nt-rt.ru>